

Panasonic

Closed Circuit Video Equipment

Network Server Software

WV-AS710

The Ideal Server Software
for
Video Storage and Distribution

NSSS
Network Server Software

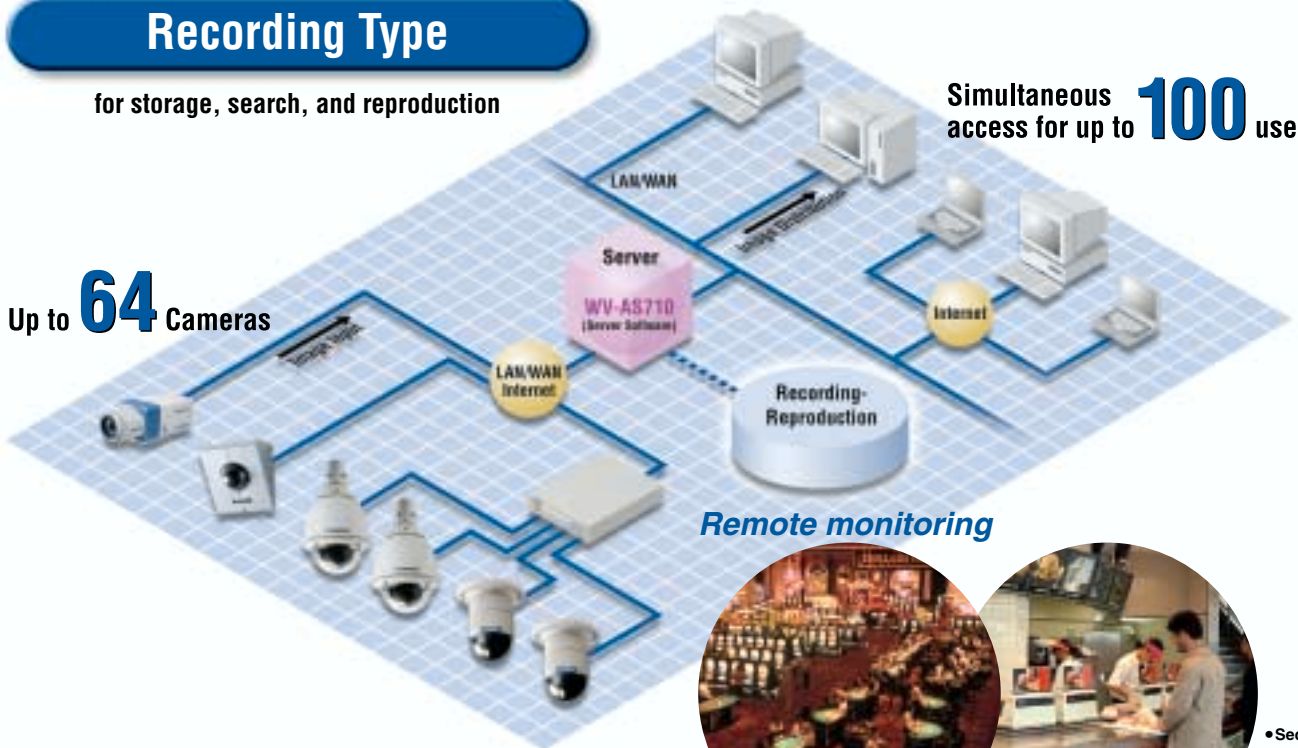
Choose from a huge array of applications!
 Select the system type by the set-up menu, that is best
 for your purpose.

Recording Type

for storage, search, and reproduction

Simultaneous access for up to **100** users

Up to **64** Cameras



Remote monitoring



Hotels/Casinos



Franchise outlet

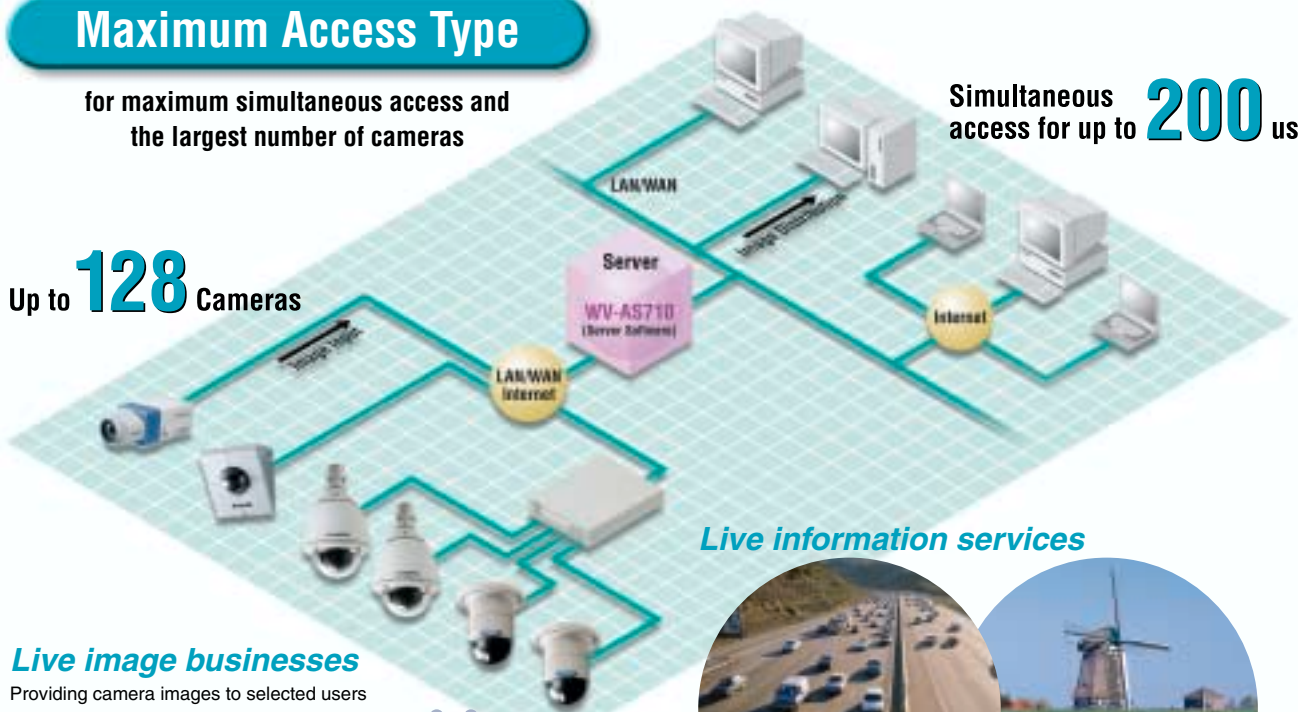
- Security service
- Shopping malls
- Banks
- Factories
- Warehouses
- Office buildings
- Schools

Maximum Access Type

for maximum simultaneous access and
 the largest number of cameras

Simultaneous access for up to **200** users

Up to **128** Cameras



Live information services



Transportation service

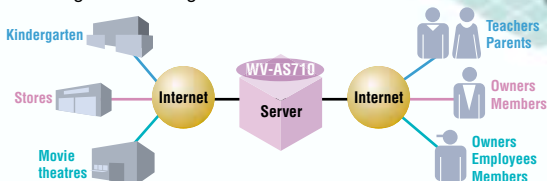


Travel information

- Theme park
- River traffic
- Exhibition
- Event

Live image businesses

Providing camera images to selected users



With support for up to 128 cameras and simultaneous access for up to 200 users, WV-AS710 is ideal for large-scale network monitoring.

Panasonic's new WV-AS710 network server software can distribute full-motion images from up to 128 remote cameras to up to 200 personal computers via an IP network. Images from the cameras are stored at the server. It allows you to shift from traditional distributed-processing networks to a server-centered network that ensures reliability and lowers overall operating costs. We call it the latest advance in global network monitoring. You will call it wonderful.

For storage and distribution of MPEG-4 video images.

In addition to full support for high-quality, high frame-rate JPEG, this software is fully compatible with MPEG-4 image compression cameras. Image size and quality and the volume of data transmitted can all be set to conform to your network environment and network transmission speed. Storage and transmission capabilities include mixed JPEG and MPEG-4 signals.

Brings Web-browser simplicity to administration and operation.

Following installation* of the WV-AS710 software, you will be able to manage and operate cameras from any standard Web browser. Via the Internet, you can manage and operate cameras at remote locations the world over.

Plus flexible system operation.

Recording Type or Maximum Access Type can be selected to fit your application and communication environment. Access levels and camera controls can also be customized to fit your customer's needs.

A rich array of monitoring functions.

Camera control functions, 4-window display function, image search and retrieval functions*, scheduling functions — this system is fully equipped to provide easy and efficient monitoring.

*For Recording Type Only.

This easy to use interface controls a rich array of functions.

This camera control menu allows you to control up to 128 cameras from a single interface.

One-click camera selection

<Camera selection function>

You can instantly select the camera you want to use.

Quick camera direction control

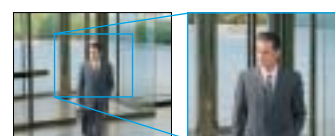
<Preset functions>

Preset camera positions allow you to select a camera position with one click of your mouse.

Take a closer look

<Zoom Function>

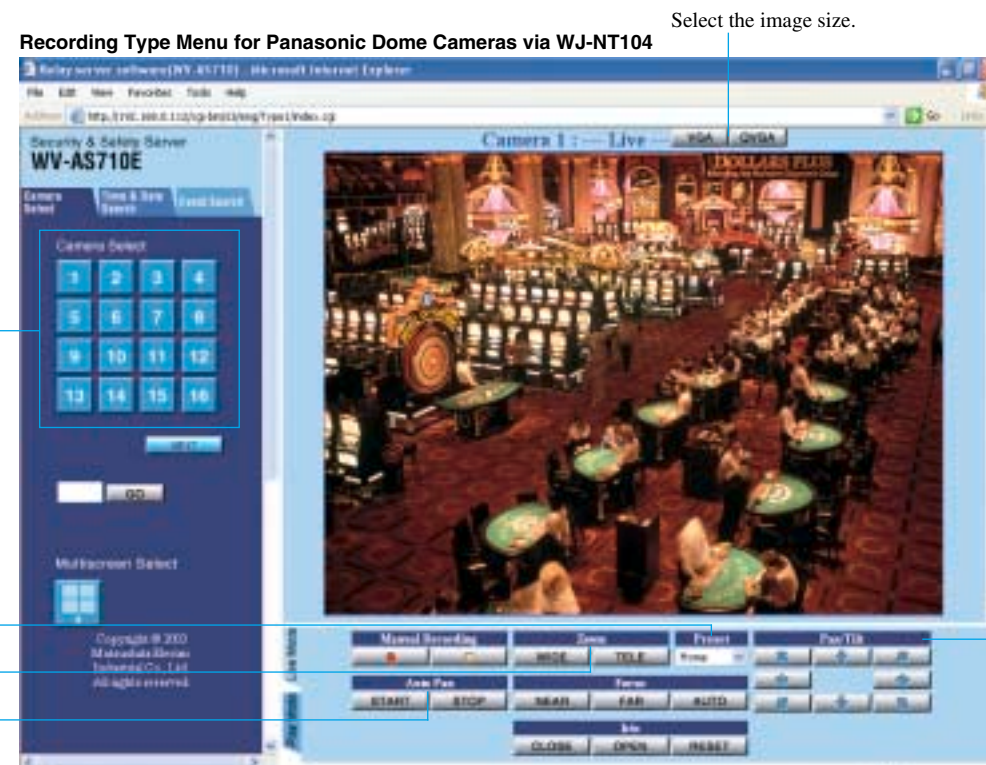
Place the cursor over the zoom button and hold down the mouse button.



Automatically Pans the area

<Auto pan function>

At one click of your mouse, start panning a preset area.



The interface can control the Panasonic Dome Cameras: WV-CS850A/CS320/CW860 Series connected to Network Interface Unit WJ-NT104, or Network Cameras WV-NS320 Series/WV-NP472 via a direct Ethernet connection.

See images from up to four locations at once.

Images from up to four cameras can be displayed simultaneously on the same monitor.



Four images from next camera

Exclusion functions prevent interference from other users.

Two types of exclusion functions prevent multiple users from using a camera at the same time.

1. Lock mode

When a user is operating a camera, all other users are excluded from its use. The lock is automatically released ten minutes after the last operation.

2. Timeout mode

The camera is automatically released when a preset time has passed since a user has taken control. The preset time can be changed from the settings display.

Easy-to-understand system settings

System type selection, camera settings, recorded image settings, user settings, group name setting, alarm settings, schedule settings, data output, system shutdown and restart — all can be controlled from the system administrator menu.



A wealth of additional convenience features

Live feed shutdown scheduling

Live feed distribution can be shut down automatically for preset days, times, or cameras. Up to 20 schedules can be constructed. Preset messages, e.g., "This camera has shut down for maintenance," can be distributed instead of the live feed.

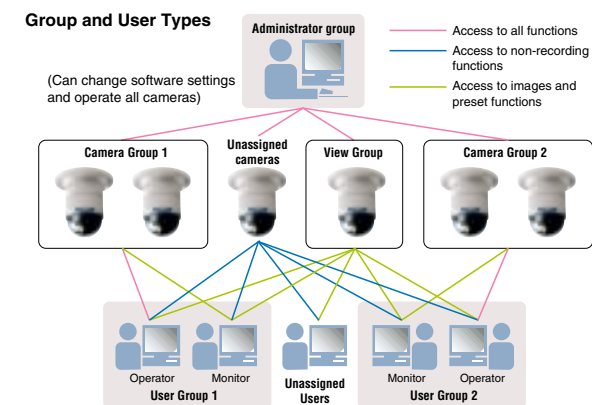
E-mail alarm notification

E-mail containing the date, time and camera number at which an alarm occurred can be sent automatically to designated users.

Security measures prevent unauthorized access

Access levels can be set for groups and individuals

Specified cameras and users can be registered as groups. Operator or monitor user type can be assigned to control access rights.



User confirmation when checking access rights

When access to camera operation and system settings is restricted to certain users, a user ID and password are required to gain access to these functions.

Hidden IP address

There is no need to worry about users having access to camera site IP addresses.

The above all photographs are simulated and shown for the purpose of explanation, actual images may differ.

Recording Type controls the way in which images are recorded, retrieved, and reproduced

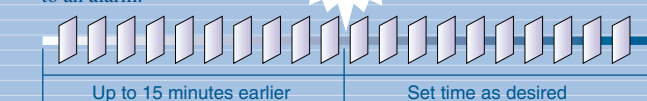
Recording Keep important scenes

Schedule recording

Images can be automatically recorded for preset days, times, and cameras. Up to 20 schedules can be constructed.

Pre- and post-alarm recording

If alarms go off, images are automatically recorded. Recordings can begin up to 15 minutes prior to an alarm.



Manual recording

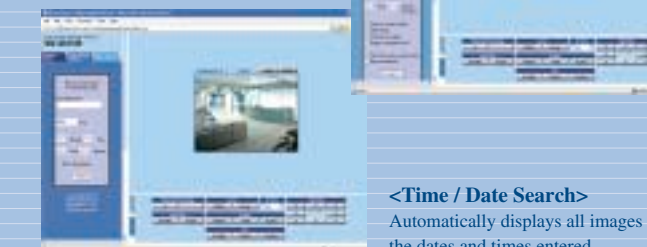
To record an image, click on the record button in the camera control display. This function can only be used by the system administrators or users with a designated access level.

Retrieval Instantly recall the scene you want to see

HTML is used to display both search results and links to the images you wish to receive. Click on the link to see the image.

<Event Search>

This function allows users to search event logs by camera number, date, time, and event content. Even content includes fixed alarms, video motion-detector alarms, and manual input.

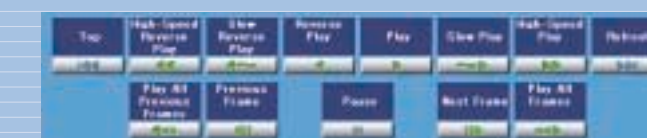


<Time / Date Search>

Automatically displays all images for the dates and times entered.

Reproduction Like operating a VTR

High-speed play*, high-speed reverse*, slow-motion, pause, fast-forward* — it's just like operating an ordinary VTR, using controls displayed on the monitor screen. All functions can be used while simultaneously viewing live feed from a camera. *Only for JPEG images




Exporting Exporting image data


Image data stored on the WV-AS710 server, can be exported to other directories for viewing using other systems. Exported images can be transferred to personal computers using FTP software.

ADMINISTRATION MENU


Change System Type



Alarm Settings



System Properties



SYSTEM REQUIREMENTS

Centre site

Item	Product requirements	
Computer ^{*1}	CPU	Pentium III 1.4GHz or faster
	Memory	512MB or more
	LAN card	100BASE-TX controller or 1000BASE-T/TX/SX controller (Installing three controllers is recommended: for camera sites, for user sites and for maintenance)
	Hard disk	No recording: 2GB or more Recording JPEG: 17GB or more per camera (when recording 1fps for a week) Recording MPEG-4: 16GB or more per camera (when recording 1.5Mbps for a day)
OS		Red Hat Linux 8.0 Professional
Server	Web server	Apache 2.0.40 or later ^{*2} (IBM xSeries 330 Pentium III 1.40GHz or IBM xSeries 345 model 22X are recommended.)

*1 Use a server compatible with Red Hat Linux.

*2 Installed automatically if Red Hat Linux is installed with "Web server".

Camera site

Item	Model number/Description
Network interface unit	WJ-NT104 Ver.1.21 or later
Connectable cameras with WJ-NT104	Cameras with PAL composite output connector
Controllable cameras	Cameras controllable by WJ-NT104 (WV-CS850A, WV-CS320, WV-CW860), and WV-NM100, WV-NP472 and WV-NS320 Network cameras
Maximum camera number	System type 1 (with recording): 64 cameras System type 2 (without recording): 128 cameras

User site

Item	Description	
PC	PC with recommended OS (see below) installed	
For browsing JPEG	Recommended OS	Microsoft® Windows® (98 Second Edition, Millennium Edition, NT 4.0 SP6, 2000 Professional, 2000 Server, XP Home Edition, XP Professional)
	Recommended browser	Internet Explorer 5.5 SP2, Internet Explorer 6.0, Netscape Navigator 4.78
For browsing MPEG-4	Recommended OS	Microsoft® Windows® (2000 Professional, 2000 Server, XP Home Edition, XP Professional)
	Recommended browser	Internet Explorer 5.5 SP2, Internet Explorer 6.0

About environment for the Internet and the web browser

•When accessing this software via the Internet

Depending on the traffic of the network or system form of the LAN (e.g. with or without firewall, etc.), html documents delivered by this software may not be displayed correctly. If your environment denies JavaScript and commands against CGI, html documents delivered by this software may not be displayed correctly since this software delivers html documents containing JavaScript and commands against CGI.

•When traffic of the network is heavy

When the transmission speed is slow or the traffic of the network is too heavy to receive image data, it may be hard to browse camera pictures, a still picture indicating failure of loading image data may appear. When this still picture appears frequently, adjust the interval time for loading (refreshing) image data.







Standard accessories

CD-ROM for installation of the server software...1
Installation guide...1

Trademarks and registered trademarks

- Linux is a registered trademark of Linus Torvalds. RED HAT is a registered trademark of Red Hat, Inc.
 - Intel and Pentium are trademarks of Intel Corporation.
 - Microsoft, Windows and Windows NT are registered trademarks of Microsoft Corporation in the U.S. and/or other countries.
 - Netscape, Netscape Navigator, Netscape ONE, the Netscape N and Ship's Wheel logos are registered trademarks of Netscape Communications Corporation in the U.S. and other countries.
- Other Netscape product names used in this document are also trademarks of Netscape Communications Corporation and may be registered outside the U.S.
- Other names of companies and products contained in this operating manual may be trademarks or registered trademarks of their respective owners.
 - Distributing, copying, disassembling, reverse engineering, and also exporting in violation of export laws of the software provided with this product, is expressly prohibited.

Reliable Panasonic Products Ideal for Use with WV-AS710

<p>Network Colour Camera WV-NM100</p> 	<p>Network Security Colour Camera WV-NP472</p> 	<p>Network Colour Dome Cameras WV-NS320 Series</p> 	<p>Network Interface Unit WJ-NT104</p> 	<p>Colour Dome Cameras WV-CS850A Series WV-CS320 Series</p> 	<p>Weather Proof & Vandal Resistant Colour Dome Cameras with Low-Light B/W Mode WV-CW860 Series</p> 
--	---	---	---	--	--

• All TV pictures are simulated. • Weights and dimensions are approximate. • Specifications are subject to change without notice. • These products may be subject to export control regulations.

DISTRIBUTED BY:

Panasonic System Solutions Company
Matsushita Electric Industrial Co., Ltd.
4-3-1, Tsunashima-higashi, Kohoku-ku, Yokohama,
223-8639, Japan
Tel 81(0)45-540-5769
Fax 81(0)45-540-5773
URL <http://panasonic.co.jp/pss/cctv/en/index.html>

Panasonic

Panasonic is the brandname of Matsushita Electric.
Printed in Japan WV-JKAS710C (2N-708)